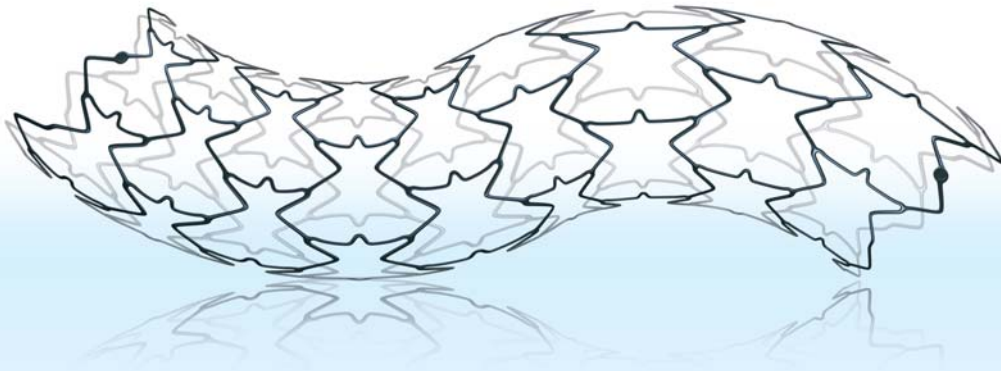
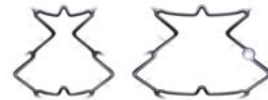


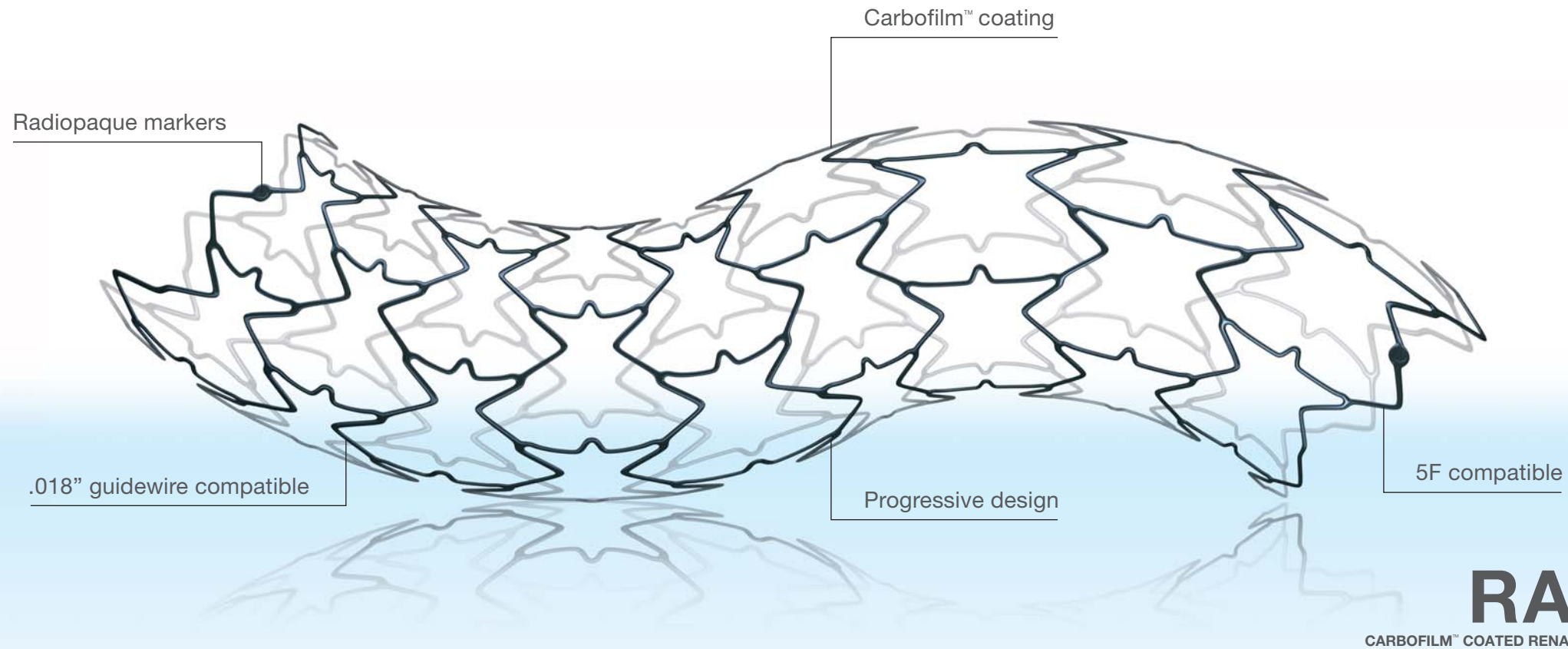
The progressive solution

Progressive multicellular design for superior flexibility and artery movement match

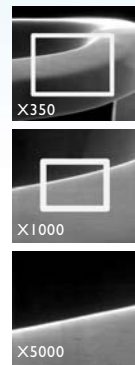


CARBOSTENT™ 
RADIX2

CARBOFILM™ COATED RENAL STENT ON RX BALLOON CATHETER



CARBOSTENT™
RADIX2
CARBOFILM™ COATED RENAL STENT ON RX BALLOON CATHETER



Proven thromboresistance*

The exclusive **mirror-polished surface** and proprietary hemo and biocompatible **Carbofilm™** coating have demonstrated to significantly reduce inflammatory tissue response and the risk of thrombosis.

This is particularly important in renal arteries that are subject to high stenosis and thrombosis rates due to the extremely calcified characteristics of the lesions and their anatomical location which leads to blood flow turbulence.

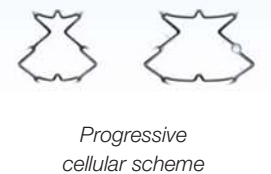
Platinum precision and no stent foreshortening

Radiopaque, platinum markers at each end of the stent guarantee pin-point placement. The unique cell architecture with zero foreshortening upon expansion allows precise positioning.



Progressive, closed cell design

The progressive cellular design scheme, designed specifically for long lesions, guarantees excellent radial force at the renal ostium and flexibility in the troncular segment. The shorter version has homogenous cellular design scheme which maximises the radial force at the ostium for highly calcified lesions and vessel patency.



New, longer 150 cm shaft

The newly developed 150 cm long shaft enhances trackability and allows you to reach the renal artery even with a radial approach.

RX delivery system

Radix2 features all the benefits of a rapid exchange delivery system.

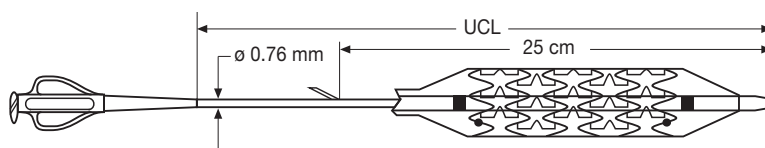
*Data on file in CID

Technical data

Stent characteristics

- Stent material: Stainless steel AISI 316 LVM
- Integral turbostratic carbon coating (Carbofilm™)
- 2 radiopaque markers
- Zero stent foreshortening upon expansion

Delivery system



Device Specifications

- Rapid Exchange (monorail type)
- Sheath compatibility: 5F compatible
- Guidewire compatibility: .018"
- Proximal shaft: PTFE coated
- Stainless steel hypotube
- Proximal shaft diameter: 2.3 F
- Distal shaft diameter: 3.5 F
- Distal shaft length: 25 cm
- Usable Catheter Length (UCL): 75 and 150 cm

Order Information

Length \ Size	12mm		17mm	
	150	75	150	75
5.0mm	ICRW5012L	ICRW5012S	ICRW5017L	ICRW5017S
6.0mm	ICRW6012L	ICRW6012S	ICRW6017L	ICRW6017S
7.0mm	ICRW7012L	ICRW7012S	ICRW7017L	ICRW7017S

Please contact your local sales representative for product availability

