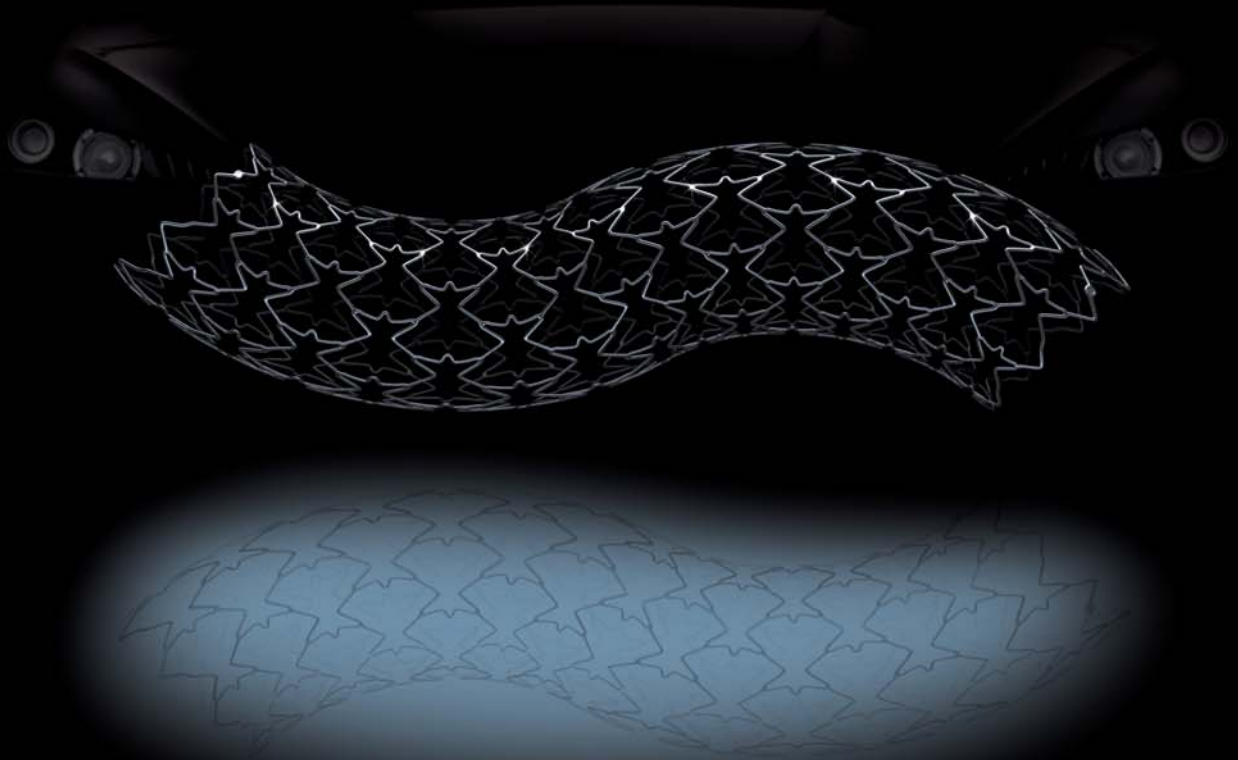


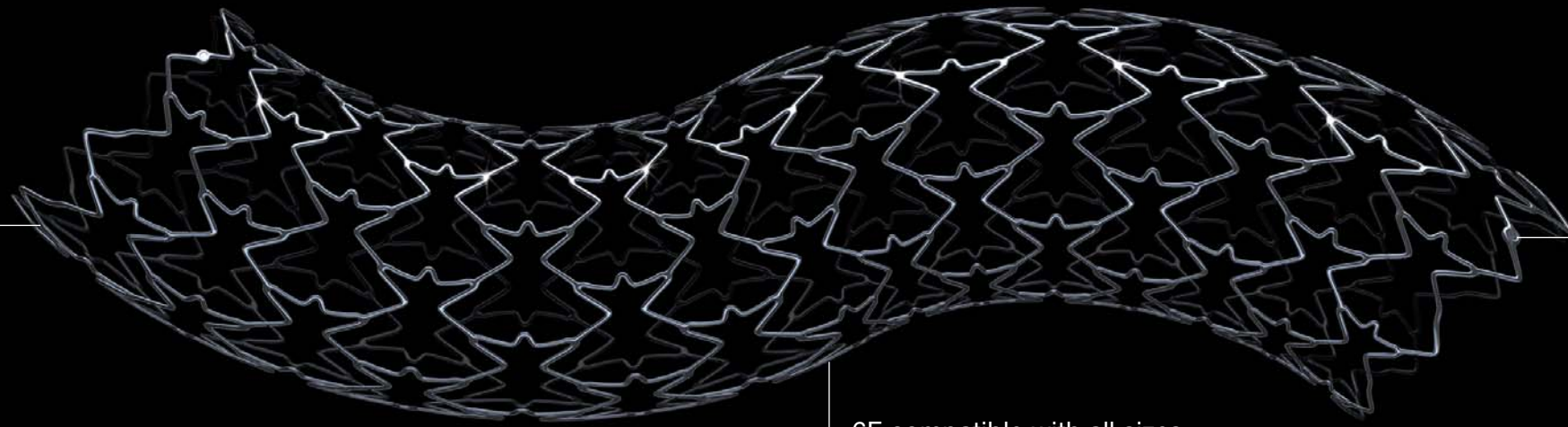
# The force of performance

CoCr stent with *i*Carbofilm™ technology for a bio-*i*nducer surface



CARBOSTENT™   
**ISTHMUS**  
LOGIC

Bio*i*nducer surface



Radiopaque markers

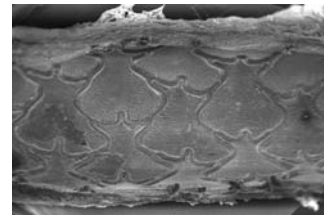
6F compatible with all sizes

CARBOSTENT™  
**ISTHMUS**  
LOGIC

### Innovative, bio*i*nducer surface

*i*Carbofilm™, the latest coating from CID, allows a further increase in density of pure Carbon while reducing its overall thickness to <math><0.3\mu\text{m}</math>. This innovative technology brings an even closer similarity to the diamond structure of pure Carbon and its exceptional bio/haemo compatibility.

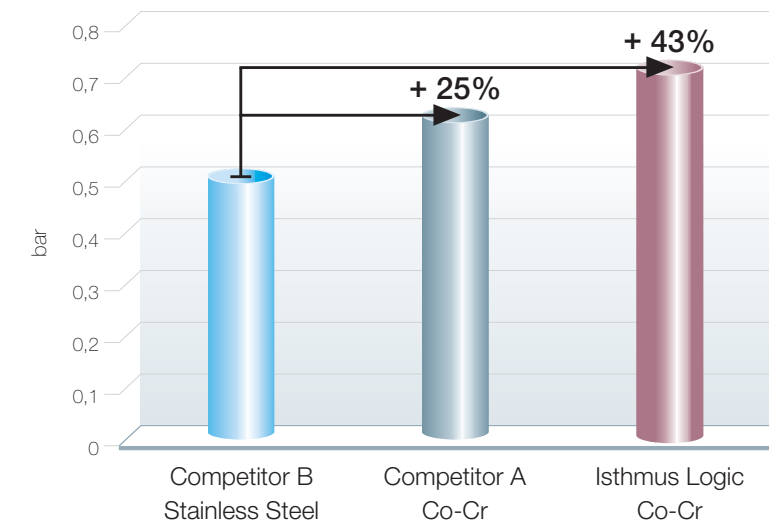
Complete stent strut endothelialization



### Flexible, cell design

The cellular design guarantees excellent flexibility for optimal conformability to the artery anatomy, optimal vessel coverage and high, uniform radial force for calcified lesions.

### Outstanding radial force




### Platinum precision and no stent foreshortening

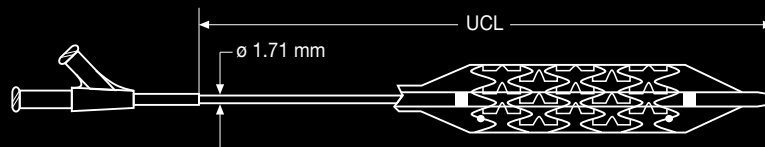
Radiopaque platinum markers at each end of the stent guarantee pin-point placement. The unique cell architecture, made of cobalt-chromium, with zero foreshortening upon expansion allows precise positioning.

## Technical data

### Stent characteristics

- Stent material: L605 Cobalt Chromium alloy
- Strut surface coating:  Carbofilm™
- 2 radiopaque markers
- Zero stent foreshortening upon expansion

### Delivery system



### Device Specifications

Sheath compatibility: 6F compatible

Guidewire compatibility: .035"

6 fold balloon

Usable Catheter Length (UCL): 75 and 135 cm

### Order Information

Length \ Size	19mm		29mm		39mm		49mm		59mm	
	135	75	135	75	135	75	135	75	135	75
6.0mm	ICLC6019L	ICLC601S	ICLC6029L	ICLC6029S	ICLC6039L	ICLC6039S	-	-	-	-
7.0mm	ICLC7019L	ICLC7019S	ICLC7029L	ICLC7029S	ICLC7039L	ICLC7039S	ICLC7049L	ICLC7049S	ICLC7059L	ICLC7059S
8.0mm	ICLC8019L	ICLC8019S	ICLC8029L	ICLC8029S	ICLC8039L	ICLC8039S	ICLC8049L	ICLC8049S	ICLC8059L	ICLC8059S
9.0mm	ICLC9019L	ICLC9019S	ICLC9029L	ICLC9029S	ICLC9039L	ICLC9039S	ICLC9049L	ICLC9049S	ICLC9059L	ICLC9059S
10.0mm	ICLC10019L	ICLC10019S	ICLC10029L	ICLC10029S	ICLC10039L	ICLC10039S	-	-	-	-

Please contact your local sales representative for product availability

