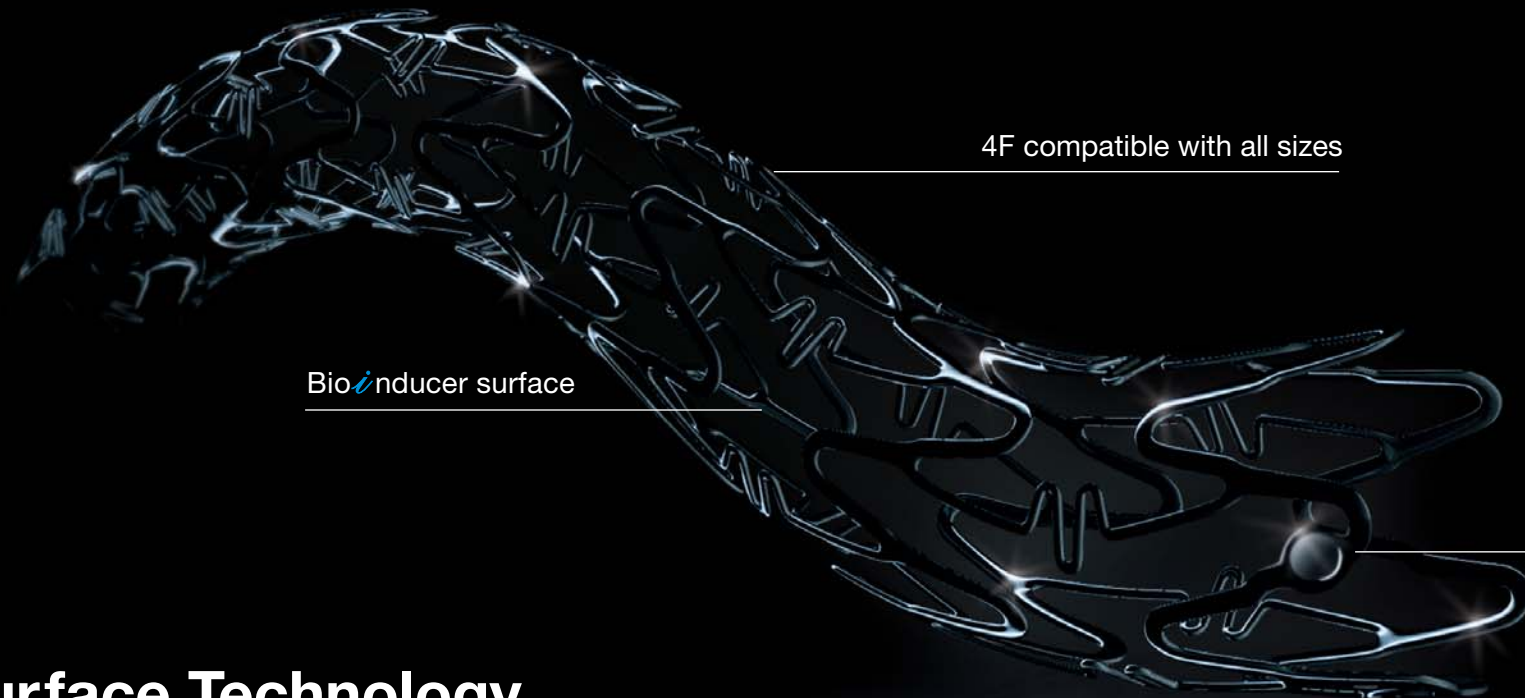


# Advancing peripheral frontiers

New Cobalt-Chrome stent with *i*Carbofilm™ technology for the treatment  
of below-the-knee lesions



CARBOSTENT™   
**INPERIA**  
ADVANCE



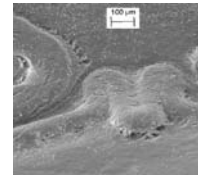
## Bioinducer Surface Technology



### Innovative, bioinducer surface

*i*Carbofilm™, the latest coating from CID, allows a further increase in density of pure Carbon while reducing its overall thickness to  $<0.3\mu\text{m}$ . This innovative technology brings an even closer similarity to the diamond structure of pure Carbon and its exceptional bio/haemo compatibility.

Complete stent strut endothelialization



(Stent implants in pig arteries at 5 days)

### Newly engineered Cobalt Chrome strut design

The high radial strength characteristics of Cobalt Chrome allow a reduction in stent strut thickness (up to  $70\mu\text{m}$ ). The more rounded design reduces the “ineffective” stent strut sections.

The benefits are: better blood flow dynamics, reduced total stent volumes and higher overall 3D stent flexibility.

Typical stent strut



Reduced bulk and rounded design

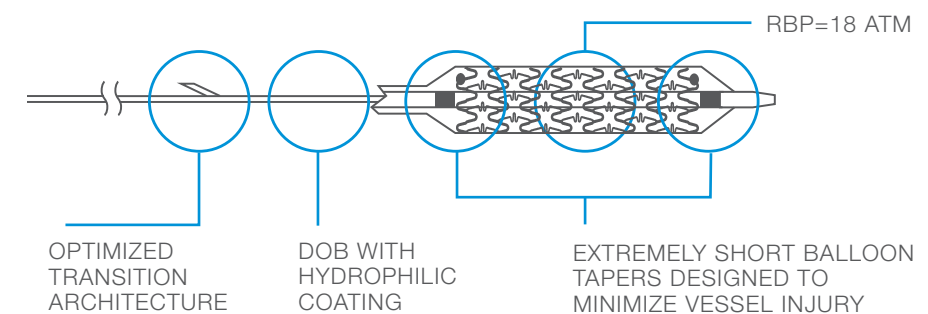
### Platinum precision, optimal visibility

Unique, closed cell architecture, design allows optimal vessel coverage with negligible foreshortening upon expansion. Radiopaque, platinum markers at each end of the stent guarantee pin-point placement.



### Newly designed delivery system

Top performance technologies have been selectively applied to the delivery system to obtain outstanding performance in terms of pushability and trackability.



### Ideal for small vessels

The progressively flexible and blended Pebax-based materials deliver superior flexibility, making it ideal for small and tortuous vessels.

### Optimum for large vessels

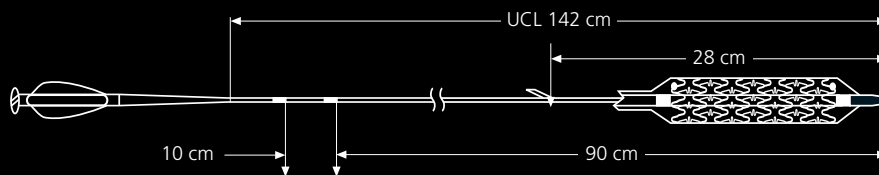
The specifically designed hypotube optimizes precision, pushability and balloon inflation/deflation.

## Technical data

### Stent characteristics

- Stent material: L605 Cobalt Chromium alloy
- Strut surface coating: Carbofilm™
- Strut thickness: small vessel 70µm - medium large vessel 80µm
- 2 radiopaque platinum markers at stent ends
- No stent foreshortening upon expansion

### Delivery system



### Device Specifications

- Rapid Exchange (monorail type)
- Sheath compatibility: 4F compatible with all sizes
- Guidewire compatibility: .014"
- Hypotube: AISI 304 stainless steel with Teflon coating
- Distal shaft length: 28 cm
- Usable Catheter Length (UCL): 142 cm
- Nominal Pressure (NP): 9 atm
- Rated Burst Pressure (RBP): 18 atm
- Average Burst Pressure (ABP): 24 atm

### Order Information

Length Size	7mm	8mm	12mm	16mm	20mm	24mm	25mm	31mm
2.25mm	ICIC22507	-	ICIC22512	ICIC22516	ICIC22520	ICIC22524	-	-
2.5mm	-	ICIC2508	ICIC2512	ICIC2516	ICIC2520	-	ICIC2525	-
2.75mm	-	ICIC27508	ICIC27512	ICIC27516	ICIC27520	-	ICIC27525	-
3.0mm	-	ICIC3008	ICIC3012	ICIC3016	ICIC3020	-	ICIC3025	ICIC3031
3.5mm	-	ICIC3508	ICIC3512	ICIC3516	ICIC3520	-	ICIC3525	ICIC3531
4.0mm	-	ICIC4008	ICIC4012	ICIC4016	ICIC4020	-	ICIC4025	ICIC4031
4.5mm	-	-	ICIC4512	ICIC4516	ICIC4520	-	ICIC4525	ICIC4531

Please contact your local sales representative for product availability

